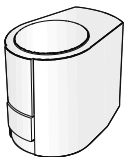
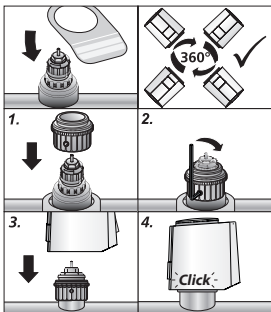


# ABRA - A5, ON/OFF Actuator 24 V AC

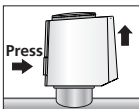
082F1110



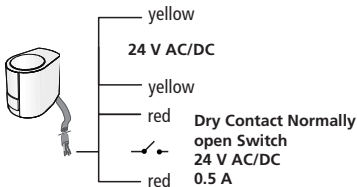
## Assembly



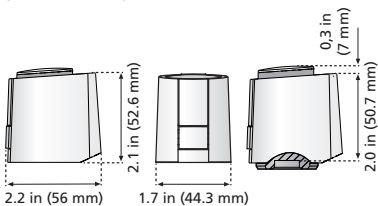
## Disassembly



## Connection



Supply voltage: Safety transformer (for AC variant) according to EN 61558-2-6 or switching power supply (for DC variant) according to EN 61558-2-16 (Europe) or class II transformer (North America)

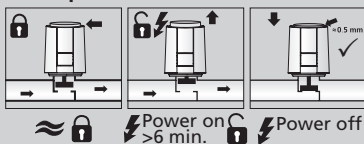


First-Open

Normally Closed

NC

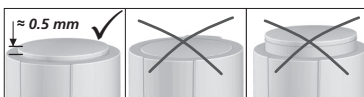
### "First-Open" function



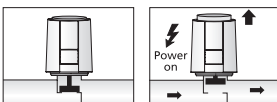
Normally Closed

NC

### Adaption check



### Function mode



### Technical Specifications

- Operating voltage: 24 V, AC/DC, +20 %...-10 %
- Operating power: 1 W
- Max. inrush current: < 300 mA for max. 2 min.
- Switching current, end switch: 24 V AC/DC: 0.5 A
- Travel: 4.0 mm
- Actuating force: 100 N +5 %
- Type of protection: IP 54
- Protection class: III
- Ambient temperature: 32 ... 140 °F (0 ... 60 °C)
- Storage temperature: -13 ... 140 °F (-25 ... 60 °C)